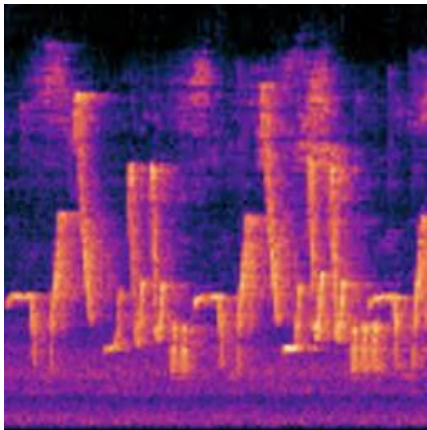


# Ph.D./master's student

## Behavioral ecology and bioacoustics



We are recruiting a **Ph.D. or master's student** who will research the behavioral ecology and bioacoustics of birds living in neotropical rainforests. The work will involve summer field seasons in Ecuador. Data analysis and additional fieldwork will be conducted in the United States. **Students with previous experience working in the tropics are strongly encouraged to apply.**

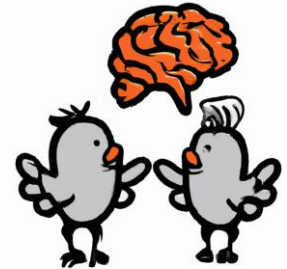
Program requirements: A bachelor's degree in biology or a related discipline. Non-native speakers need English proficiency (TOEFL iBT 90). For a complete list of requirements, please consult the following links: doctoral program: <https://illinoisstate.edu/academics/behavior-ecology-evolution-systematics-doctorate/>, master's program: <https://illinoisstate.edu/academics/behavior-ecology-evolution-systematics-masters/>

In addition to research, the successful candidate will serve as a teaching assistant at Illinois State University during the Spring and Fall semesters. The candidate will mentor undergraduate researchers and collaborate with scientists both in the United States and Ecuador.

Come and join our thriving community of researchers and diverse pool of graduate students! If you are interested, please **email** Dr. Carlos Rodriguez-Saltos ([carod12@ilstu.edu](mailto:carod12@ilstu.edu)) using the heading: "BeatBrain graduate position". In your email, include a paragraph stating your interest in the position and attach your Curriculum Vitae, including the names and contacts of two professional references.



**BeatBrain  
Lab**



**BIRD BRAIN  
COLLAB**

